



The Tell Tale

The Official Publication of the Shreveport Yacht Club



COMMODORE'S COMMENTS

I would like to thank all the members who came out last Friday night to take care of the business of the Club. We have a newly elected Board, which I wish much success. The Sailing Instruction Committee is now a standing committee and will be operated as such. They have worked extremely hard and deserve this new role.

The second amendment change to the By-laws was not addressed, as the motion was not posted in a timely manner for consideration. As was stated by our Treasurer, our expenses and revenues are just about on target with our budget projections for 2010. The problem with this is our budget has remained flat, except for a four percent increase for utilities, for the last three years. We have not increased dues for six years. The CPI for inflation for this time period is 9.6%. The Board has spent a great deal of time and thought on how to address this issue. We are a private Club and as such we have self-generating revenues. If our current services to our members are to remain the same, or perhaps increase, with the number of new members we are experiencing, something has to be done. Nowhere else in our lives have costs remained the same for six years. We are currently able to operate, but we are taking from other accounts to cover our operating budget. We have no rainy day fund to cover a new roof, major heating or cooling problems, or a myriad of other situations that could happen to a Club as old as ours. Please read the proposed by law changes included in this *Tell Tale* and be ready for a lively discussion in December at our special meeting.

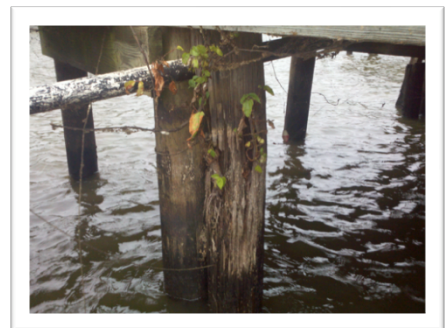
The other items we will address in December are the Long Range Planning Committee Projects:

We are considering a \$400+ Capital Improvements project at SYC. This project would include tearing down "B" Pier as we know it and replace it with a double-sided boathouse similar to "A" Pier. This new boathouse would provide an additional 20-covered overwater powerboat slips as compared to present. "B" Pier is our oldest asset. It has been repaired considerably to extend its useful life. Over 50% of the load bearing pilings in the boathouse has been "Sistered". Sistering—a process of driving a piling alongside an existing piling that has deteriorated at or below the water and then connecting the old piling top to the new piling bottom with through bolts. In addition, we would like to rebuild the 25 westernmost slips on "C" Pier (inside harbor) that are in various states of disrepair and replace the settling apron around the large hoist and its associated seawall due to erosion. The Long Range Planning Committee Members urge the membership's thoughtful consideration of these much-needed projects aimed at enhancing our club for the years to come.

Kaye Crichlow
Your Commodore



Settling apron by large hoist



Sistered piling on B-pier



C-pier slips in harbor

PROPOSED BY-LAW CHANGES

The following is the proposed By-Law changes regarding club member dues as proposed and voted on by the board on October 14, 2010. The changes are in Bold and underlined.

ARTICLE V

Initiation Fees, Dues, Deposits, Shares of Stock and Taxes Thereon

Section 1. Initiation fees, dues and deposits shall be as follows:

a) Effective January 1,2011, the initiation fee of an ACTIVE MEMBER is \$500.00, the monthly dues shall be **\$80.75**, and Long Range Planning dues **\$8.07** per month.

b) Effective January 1,2011, the initiation fee of a JUNIOR MEMBER is \$150.00, the monthly dues shall be **\$65.55**, and Long Range Planning **\$6.55** per month. In addition, a \$100.00 deposit is required of all Junior Members upon joining or conversion from novice status. The deposit will be returned upon resignation, less debt owed, or will be applied towards the purchase of a share of stock if the Junior Member converts to active status.

c) Effective January 1,2011, the initiation fee of a NOVICE MEMBER is \$75.00, the monthly dues shall be \$14.50, and the Long Range Planning dues shall be \$1.50. Monthly dues will increase to \$20.50 and Long Range Planning to \$2.50 for full-time student Novice Members over age 21.

d) An ASSOCIATE MEMBER shall pay no initiation fee but shall pay monthly dues and Long Range Planning dues of one-half an Active Member.

e) MILITARY MEMBERS shall pay \$100.00 annually in advance as an initiation fee; however, total payments are not to exceed the initiation fee of an Active Member. Effective November 1, 2004, monthly dues shall be **\$80.75**, and Long Range Planning dues **\$8.07**. Military Members will not have the right to vote or hold office.

f) HOHONORARY MEMBERS shall pay no initiation fees or dues.

g) INACTIVE MEMBERS: Upon the written request of any Member, the Board of Directors may, in its discretion, suspend payment of dues of the Member for such period of time as the Board may determine. An Inactive Member shall not have the right to vote or hold office.

h) The initiation fee of a NON-RESIDENT MEMBER is \$500.00, the monthly dues and Long Range Planning dues shall be one-half that of an active member.

i) Any Federal or State taxes levied on initiation fees, dues or shares of stock shall be added to the above amounts.

j) Upon notice of acceptance, the Members shall pay the initiation fee and at least one month's dues in advance.

Special Business

Meeting

Friday, December 10

6:30 p.m.

Discussion will include the proposed By-Law changes and Long Range Planning

You are encouraged to attend but attendance is not mandatory.

Please refer to the Commodore's Comments for more information.

UPCOMING EVENTS

NOVEMBER

- 6 – Murder Mystery Party
- 11 – Board Meeting
- 28 – Last Sunday Race of 2010

DECEMBER

- 5 – Annual Tree Trimming Party
- 10 – Special Business Meeting
- 11 – Commodore's Party
- 18 – Christmas Boat Parade & Santa Race
- 19 – Santa Claus Visits
- 31 – New Year's Eve Blow Out



Contributions to The Tell Tale are always welcome & encouraged. Please email correspondence to shreveportyachtclub@comcast.net.